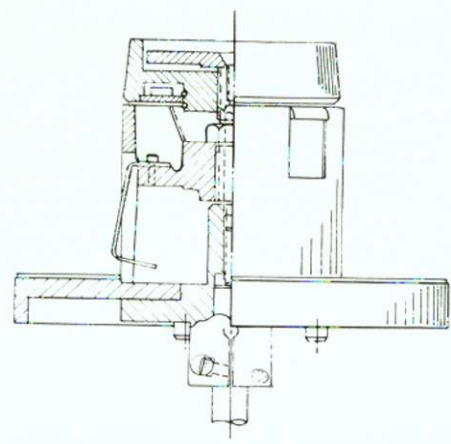


Times being what they are, prices and specifications are subject to change without notice.



Merlin Torque Motor Assemblies for Ampex VTR's

Torque motor assemblies for all Ampex VR-1000, VR-2000 and AVR-2 VTR's can be easily and inexpensively replaced with Merlin refurbished units. Merlin can also supply the same improved torque motor assemblies for all models of Recotec tape evaluators.

Merlin reconditions motor assemblies to original specifications, including motor and brake, bearings, alignment of motor shaft, resurfacing brake drum, relining brake and adjustment of completed assembly.

The motor is fitted with our exclusive hub and turntable which mounts to the shaft with a rigid steel collet... eliminating shims and spacing washers used with the original.

The new hub assures correct turntable height after the assembly is replaced on the transport as each may be adjusted with the use of our turntable height setting gauge (available for purchase or loan).

Accurate turntable height and improved rigidity of the motor and hub means improved tape handling and reduction of tape edge damage.

Motor assemblies are refurbished on an exchange basis and loaners are available. Hubs may be converted to late-type hold down locks at the same time.

- | | |
|-------------|---|
| Model ME-08 | Motor Assembly
Ampex VR-1100, VR-1200, VR-2000 |
| Model ME-09 | Motor Assembly
Ampex VR-1000 |
| Model ME-11 | Motor Assembly
Recotec Evaluators |
| Model ME-10 | Turntable Height Gauge |

CUSTOM SYSTEM SERVICES

Merlin Engineering Works has complete design, engineering and fabricating capabilities for custom systems. Call for information or quotations.

CALL TOLL FREE
800-227-1980
IN CALIFORNIA, CALL COLLECT
415-329-0198

MERLIN
MERLIN ENGINEERING WORKS