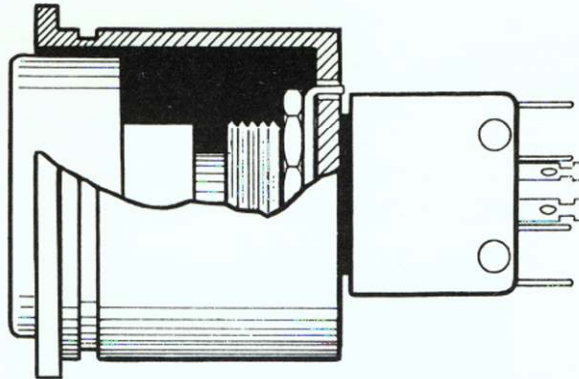


MERLIN
MERLIN ENGINEERING WORKS

Times being what they are, prices and specifications are subject to change without notice.



Merlin ME-168 VTR Transport Control Pushbutton Kit

The ME-168 is a complete kit of five switches, housings and engraved lens caps which replace the transport controls on Ampex quad VTRs.

Lens caps are permanently engraved PLAY, RECORD, STOP, FORWARD and REWIND. Lamps operate cooler and last longer because of the extra air space provided by large diameter switch stems. Flanged base lamps are designed to stay in place.

Anti-rotation key in switch stem eliminates the need to key the cap into an escutcheon slot, and lens caps protrude less to provide more convenient machine operation.

The cost of the entire kit of five switches is comparable to the cost of just one switch supplied by the manufacturer, but the most compelling reason for replacing the original switches with the Merlin ME-168 control kit is that these push button assemblies do not disintegrate and fall out on the floor.

A similar set of switches is available to replace the function select switches / Tape Audio, Audio Only and Ready.

ME-168 A	Function Switch Kit	VR 2000 or VR1200
ME-168 B	Function Switch Kit	VR1100
ME-168 C	Control Switch Button Kit	

CUSTOM SYSTEM SERVICES

Merlin Engineering Works has complete design, engineering and fabricating capabilities for custom systems. Call for information or quotations.

CALL TOLL FREE
800-227-1980

IN CALIFORNIA, CALL COLLECT
415-856-0900

MERLIN
MERLIN ENGINEERING WORKS

1880 EMBARCADERO • PALO ALTO, CA 94303 • (415) 856-0900 • TWX-910-373-1782